

TWIN PLUS TRUNKING

Twin Plus is a large, segregated, two-compartment skirting and dado trunking system that provides high capacity cable containment for most commercial environments.

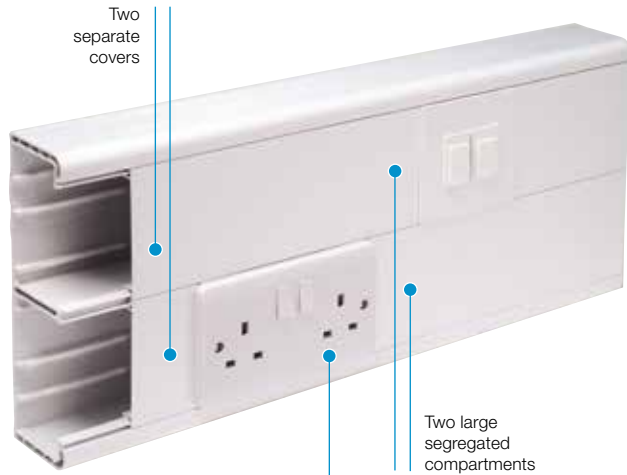


Product information

- 210 x 57mm
- 2 large segregated compartments
- Can be subdivided
- Separate cover access to each compartment
- Suitable for skirting and dado application
- Self extinguishing and non-flame propagating PVC-U
- Fire clips available to secure cables within trunking and prevent premature collapse in the event of a fire

Data information

- Compliant up to Cat 7a
- 50mm bend radius fittings
- Adjustable data box 32-47mm
- Screened data boxes
- Steel screening divider available to BS EN 50714-2

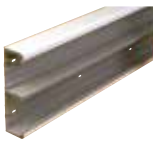


Standard Colour
WH
WH: White

Part M

For box assemblies and spacers that meet the requirements of Part M (DDA) please refer to page 54.

Basic components



Base unit

code	pack
EMT60WH	2 x 3m



Cover

code	pack
ETL1WH	8 x 3m

REASSURINGLY RECYCLED

OUR TWIN PLUS TRUNKING BUILT UP PROFILE IS MANUFACTURED USING 69% RECYCLED MATERIAL.

Fittings (ABS)



Coupler

code	pack
EC60WH	1



End cap

code	pack
EEC60WH	1

For additional retention use end cap retaining screws G1310 (Pack 40)



Internal bend assembly

code	pack
EIB60WH	1



External bend assembly – standard

code	pack
ESXB60WH	1

Capacity reduced by 50%

p251

Technical Information

Fittings (ABS)



External bend assembly – large

code	pack
EXB60WH	1



Flat angle assembly

code	pack
EFA60WH	1



Flat tee assembly

code	pack
EFT60WH	1



Note: 135° versions are also available. For more information call the Technical Team on +44 (0)1424 856688

Components



Dividing fillet – PVC-U

code	pack
LDF1	8 x 3m

Firefly clips



NEW

Fire clip Twin Plus

code	pack
FCTP	10



NEW

Don't forget, Firefly clips to comply with the current edition of BS 7671 Wiring Regulations

See page 141 for more information

Boxes and plates



***RCD/MCD housing**

code	pack
EAHC1MWH	1

*Up to 4 modules can be accommodated

Note: RCDs are not supplied by Marshall-Tufflex



1 gang accessory box

code	depth	pack
ESSB1WH	30mm	20



2 gang accessory box

code	depth	pack
ESSB2WH	30mm	10



Accessory box spacer

code	size	pack
ES1WH	14mm	4

For use between accessory boxes



1 gang adjustable depth box

code	depth	pack
EAB1WH	32 – 47mm	10



2 gang adjustable depth box

code	depth	pack
EAB2WH	32 – 47mm	5



1 gang accessory plate

code	pack
ESSP1WH	2



2 gang accessory plate

code	pack
ESSP2WH	2

Please see page 261 for more information on the range of adjustable boxes

Part M

For assemblies and spacers that meet the requirements of Part M (DDA) please refer to page 54.





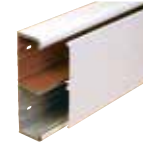
Steel screening divider
code pack
ESF60 1 x 1.5m
Note: optional steel screening divider to assist in compliance with BS EN 50174-2



Steel screening divider bonding strap
code pack
ESF2 5



Bonding strap
code pack
ESBS1 5



Screened base unit (comp 1 or 2)
code pack
EMT60CS1WH 1 x 3m
Note: Can be used to screen top or bottom compartment (Lids supplied separately)



Screened Main compartment cover
code pack
ETL1CSWH 1 x 3m



1 gang screened accessory box
code depth pack
ESSB1SWH 30mm 20



2 gang screened accessory box
code depth pack
ESSB2SWH 30mm 10

Screening

Conductive spray (CS) is unique to Marshall-Tufflex and is applied in the factory to assist in screening from electromagnetic interference to data and communications cabling within trunking systems. The coating is applied to a range of data boxes, covers, clip-on components and fabricated fittings.

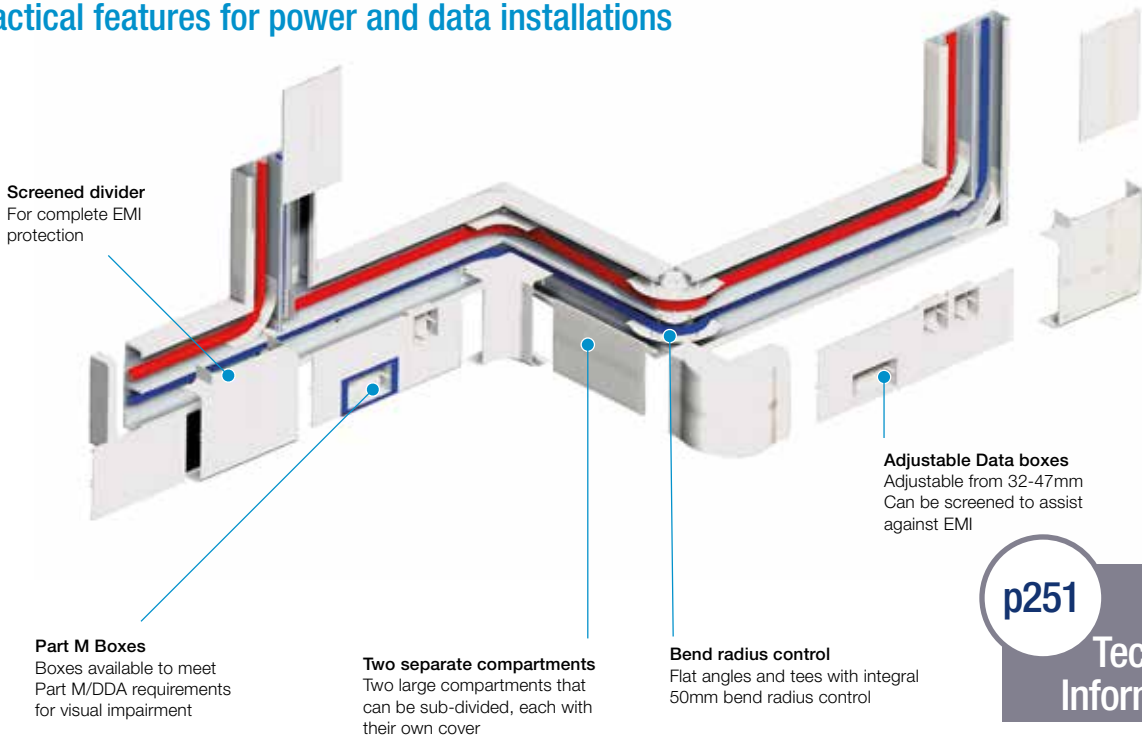
WARNING: A CS coating is not suitable for low voltage circuits. As per the current version of BS 7671 wiring regulations. For data/voice use only.

Screened compartments key to coding

CS1 = screening in compartment 1

Twin Plus

Twin Plus is a high cable capacity trunking system with a variety of practical features for power and data installations



p251
Technical Information